



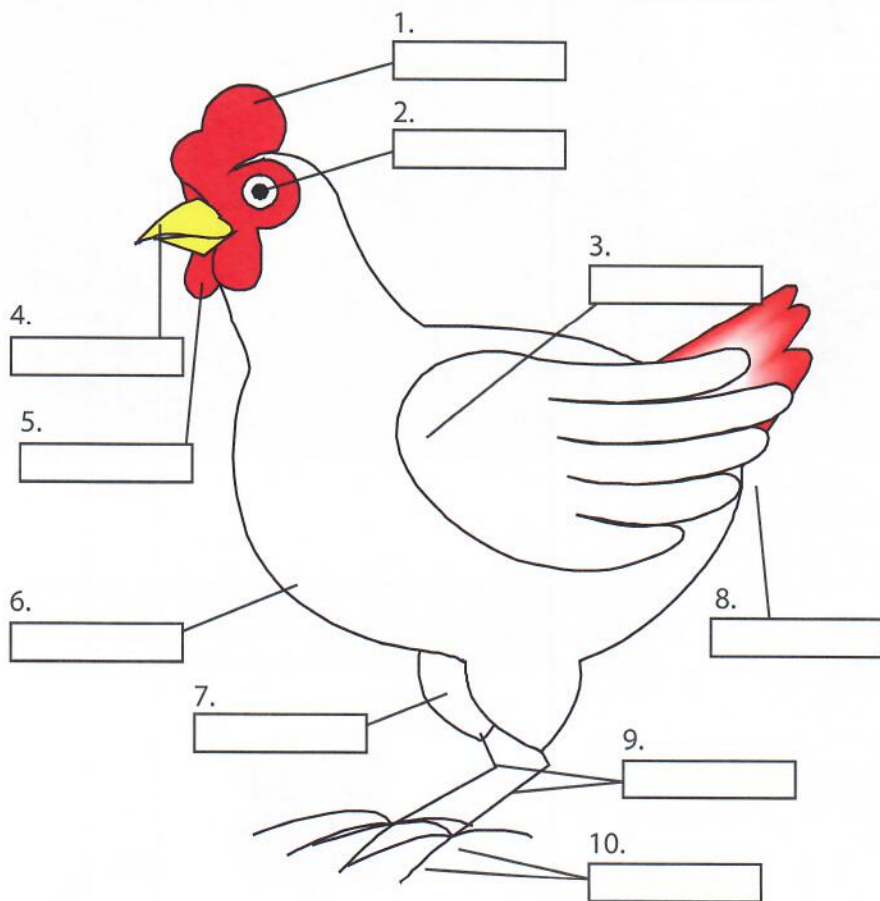
4-H Youth Guide

# Poultry

## The Broiler Project

Are you responsible? Do others trust you to follow through with a commitment? Being responsible is a skill everyone should have. Learning to be responsible can start by caring for an animal. When you care for an animal, you are responsible for providing everything the animal needs. To do this, you need to know about your animal and how to take care of it.

Raising broilers can be fun. Broiler projects are suitable for young people of all ages. The 4-H broiler project involves raising chicks from their first day of life to market weight at 42 to 49 days old. The primary objective of producing broilers is to improve growth, so 4-H'ers involved in the broiler project need to be concerned with housing, brooding, heating, lighting, feeders, waterers, feeds, feeding and health. For example, on the topic of housing, broilers require something to protect them from predators and promote growth.



### Chicken Parts:

If you are going to be responsible for your chicken, you must be familiar with its anatomy.

### Directions:

Label the parts of the chicken, using the following parts:

- beak
- hock
- eye
- shanks
- comb
- breast
- vent
- claws
- shoulder
- wattles

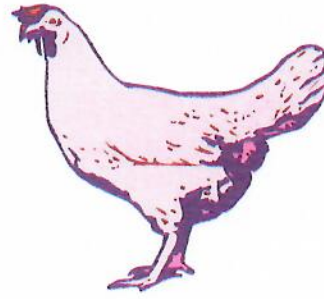
Answers: 1. Comb, 2. Eye, 3. Shoulder, 4. Beak, 5. Wattles, 6. Breast, 7. Hock, 8. Vent, 9. Shanks, 10. Claws



# Word Search

Find and circle the words in the puzzle.

- BEAK
- BREAST
- COMB
- EARLOBE
- EYE
- HOCK
- SHANKS
- SHOULDER
- TOES
- VENT
- WATTLES



What is the most musical part of a chicken?

Answer: The drumstick

# Word Scramble

Unscramble the following words:

1. lirrboe \_\_\_\_\_
2. poco \_\_\_\_\_
3. nitbihxeio \_\_\_\_\_
4. edef \_\_\_\_\_
5. wtera \_\_\_\_\_
6. tlpule \_\_\_\_\_



Why did the chicken cross the road, roll in the mud and cross the road again?  
 Answer: Because he was a dirty double crosser

Answers: 1. broiler, 2. coop, 3. exhibition, 4. feed, 5. water, 6. pullet



Visit our website: [www.LSUAgCenter.com](http://www.LSUAgCenter.com)

**William B. Richardson, LSU Vice President for Agriculture**  
 Louisiana State University Agricultural Center  
 Louisiana Agricultural Experiment Station  
 Louisiana Cooperative Extension Service  
 LSU College of Agriculture

Pub. 3407 (1M) 7/15

The LSU AgCenter and LSU provide equal opportunities in programs and employment.

# Fun Facts About Chickens!

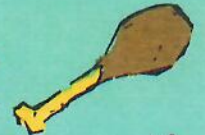
- Chickens can travel up to 9 miles an hour.



- There are more chickens on Earth than there are people.



- The average person eats 85 pounds of chicken per year.



- The closest living relative to the Tyrannosaurus rex is a chicken.



References: University of Tennessee, <http://www.utextension.utk.edu/4h/projects/activities/Poultry-W070.pdf>; [Factoryfarmmap.org](http://www.factoryfarmmap.org); <http://www.utextension.utk.edu/4h/projects/activities/Poultry-W070.pdf>  
 Dr. Theresia Lavergne, LSU AgCenter Poultry Specialist



Visit our website: [www.LSUAgCenter.com/4hprojects](http://www.LSUAgCenter.com/4hprojects)

Louisiana 4-H is an educational program of the LSU AgCenter.